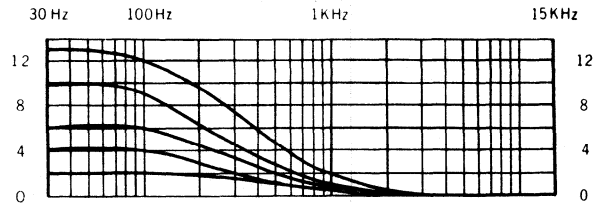
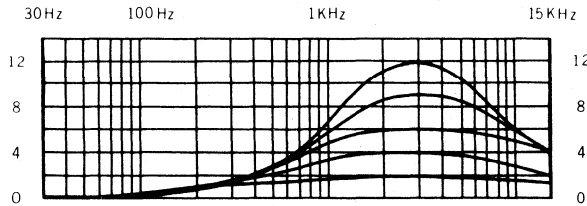


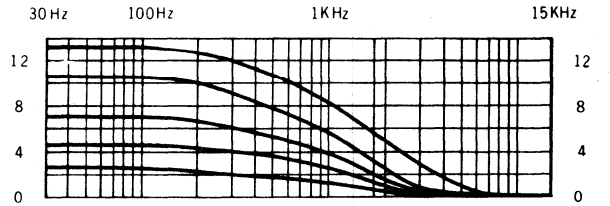
**1500 Hz HIGH FREQUENCY EQUALIZATION**



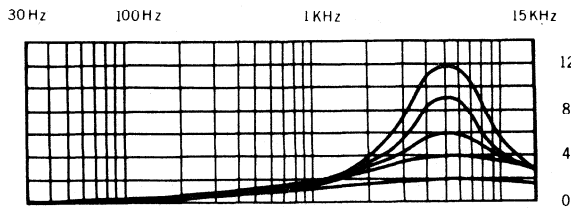
**100 Hz LOW FREQUENCY EQUALIZATION**



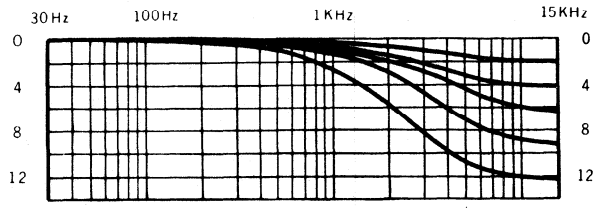
**3000 Hz HIGH FREQUENCY EQUALIZATION**



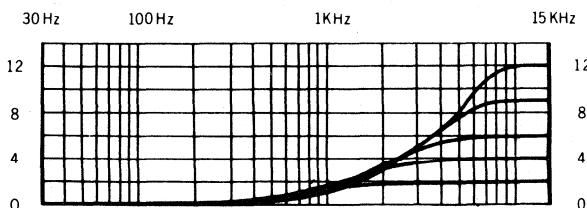
**300 Hz LOW FREQUENCY EQUALIZATION**



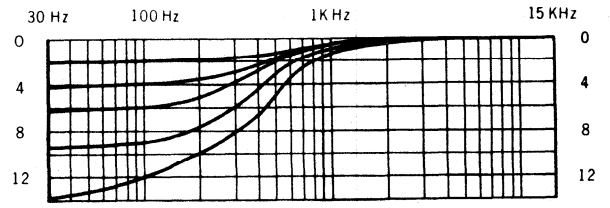
**5000 Hz HIGH FREQUENCY EQUALIZATION**



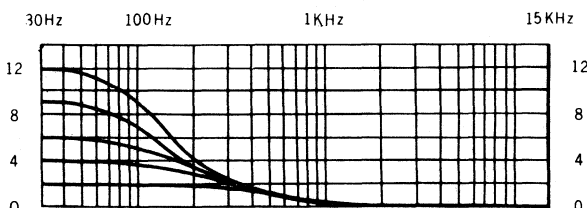
**10,000 Hz HIGH FREQUENCY ATTENUATION**



**10,000 Hz HIGH FREQUENCY EQUALIZATION**



**100 Hz LOW FREQUENCY ATTENUATION**



**40 Hz LOW FREQUENCY EQUALIZATION**

**FIGURE 15**