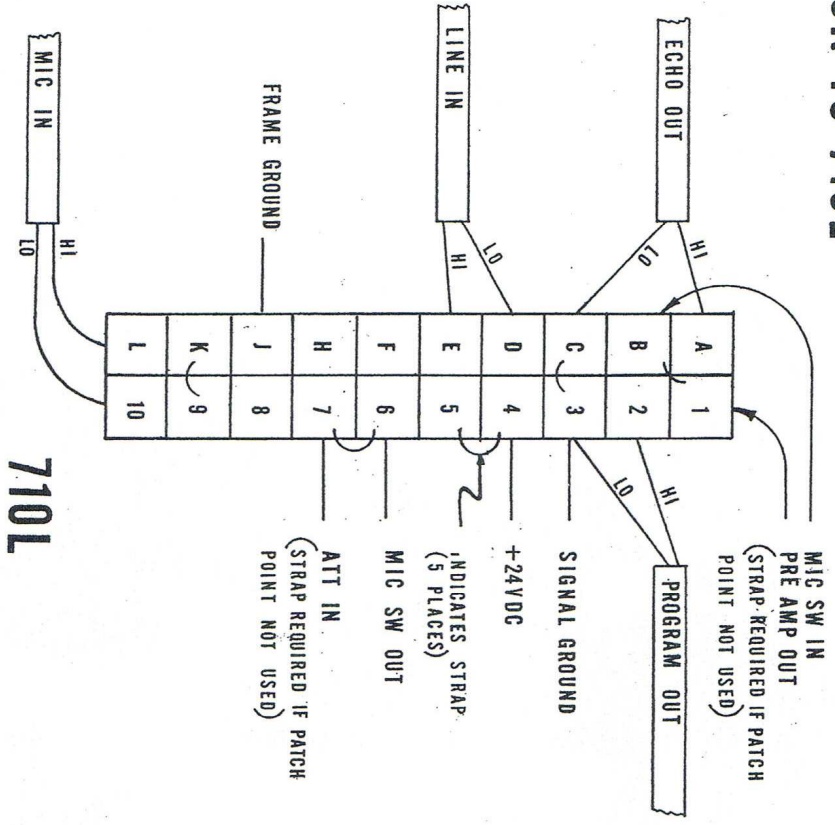
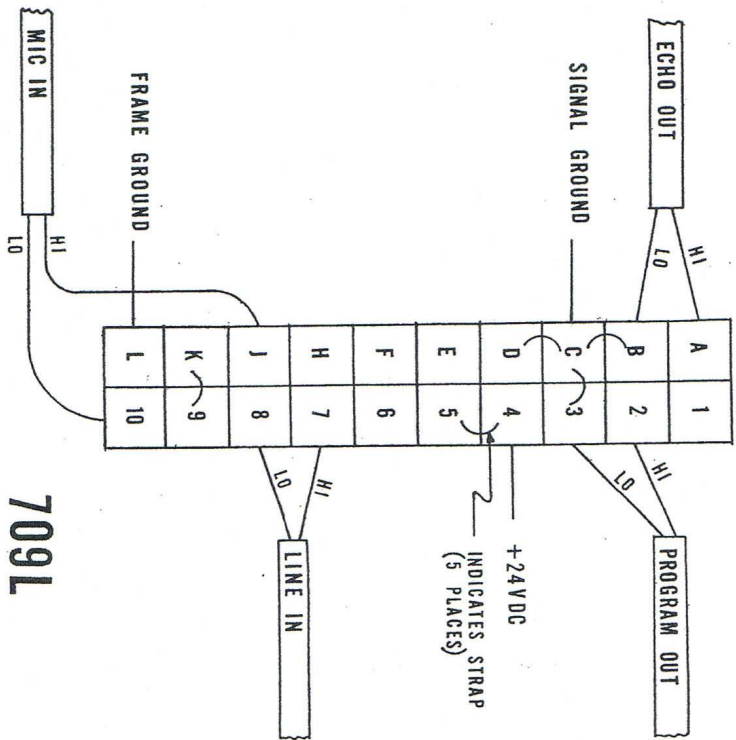


# 709L CONVERSION TO 710L



NOTES:  
1. IF SHIELDS ARE TO BE TIED AT THIS CONNECTOR, CONNECT TO SIGNAL GROUND.

NOTES:  
1. IF SHIELDS ARE TO BE TIED AT THIS CONNECTOR, CONNECT TO SIGNAL GROUND.

**Orphan Audio**  
Restoration and Preservation of Classic Audio Equipment

www.orphanaudio.com

**ELECTRODYNE**  
AUDIO™